



# Vertically Integrated Solutions

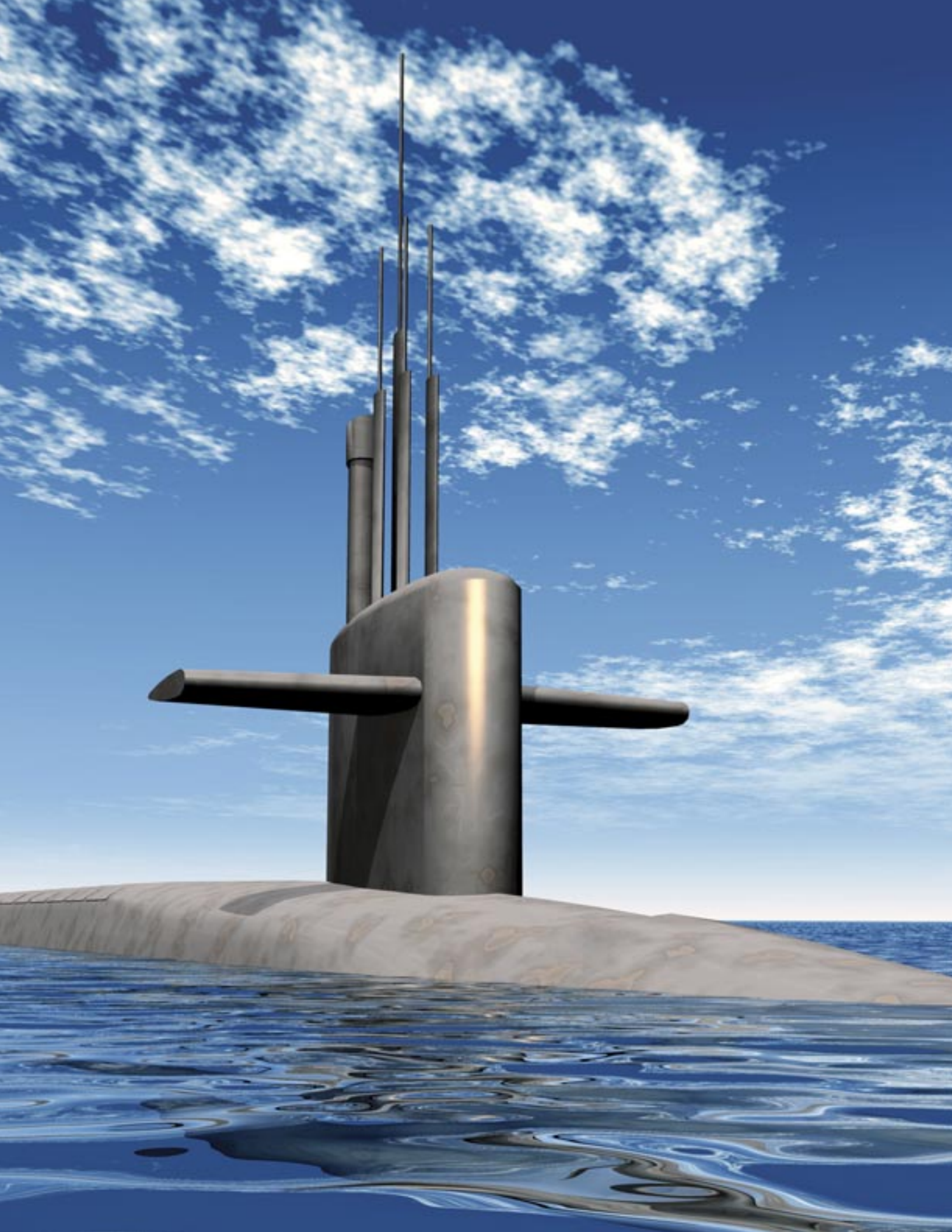
Connectivity | Engineering | Automation



[cleevetech.ca](http://cleevetech.ca) | [solutions@cleevetech.com](mailto:solutions@cleevetech.com) | 905-579-9502 | [in](#) [f](#) [twitter](#)

*Cleeve Group of Companies:*





## PRESIDENT'S WELCOME



As you review our extensive corporate brochure, you will see the Cleeve Group of Companies (Cleeve) truly is a vertically integrated supplier. From value-add component packaging and labelling, to sophisticated automated equipment and controls, and everything in between. Cleeve provides you with one stop shopping; and even more importantly, one responsibility source. No hassles, no disputes — only good customer service and quality products. For our customers, that means less administration, fewer shipping and receiving requirements, and an overall reduced overhead. All resulting in less cost to you.

Our products are manufactured to the highest industry standards, with each of our companies specialized in their field, yet working closely together to bring you the best value available in the business. Our intermesh of companies and their breadth of products and services are unmatched by any one single supplier. It's what makes us unique, and dependable — it's what we have been doing for over 25 years.

After reviewing our brochure, be sure to give us a call so we can meet with you and further discuss how we can help make you even more successful. We have sales offices, distributors and agents around the world, ready to assist.

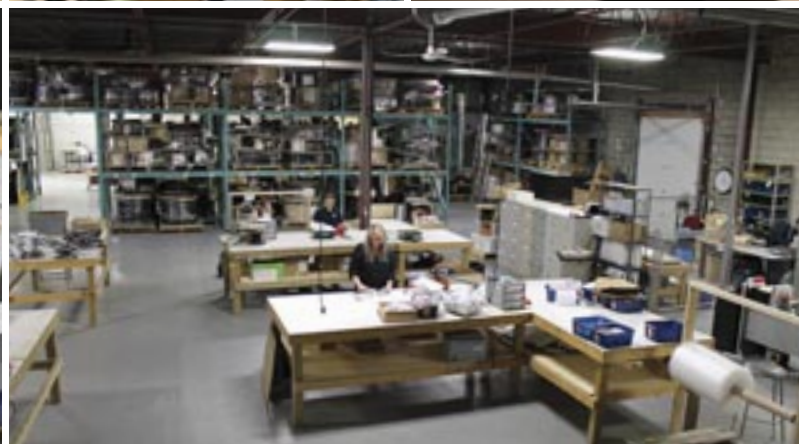
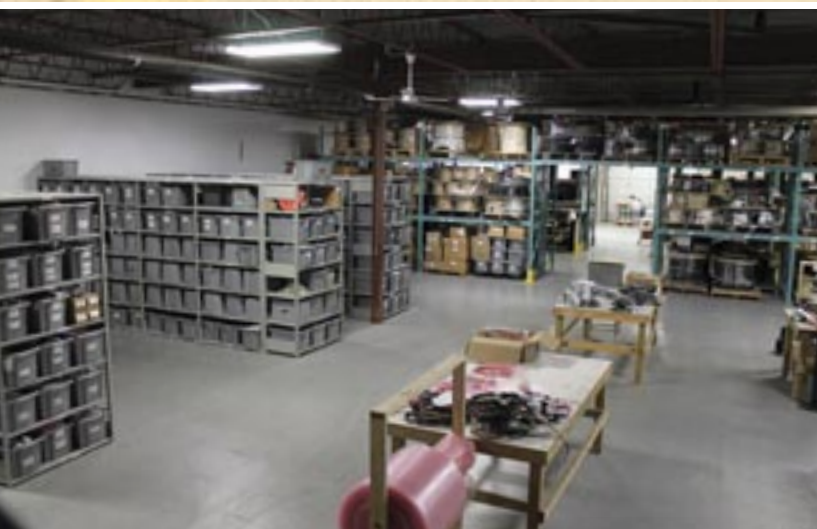
If you have any questions, call our head office, or contact me directly. I am happy to assist you in any way possible.

Sincerely,

A handwritten signature in blue ink that reads "Paul Church". The signature is fluid and cursive, with a prominent initial "P".

Paul Church  
President, Cleeve Group of Companies





# OUR FACILITIES

Cleeve's strength lies in a highly focused engineering approach to solving customers' problems. We are a high-tech, innovative, international company that has developed a substantial profile in the electrical interconnect sector of the aerospace and military industry worldwide. Cleeve has earned a reputation for taking the design and supply of products above and beyond our customers' expectations.

With facilities around the world, including Canada, United States, Europe, and the United Kingdom; and with local agents throughout the globe, Cleeve is well positioned to service our global customers. From Asia to the continental USA, and from large multinationals to smaller enterprises, Cleeve offers each and every customer access to our globally based resources, including manufacturing capacity, in-country sourcing, intelligent inventory management, project and risk control management, local service and technical support, and customized services. We have over 50,000 square feet, of space available including full shipping and receiving, storage and manufacturing capability at many of our locations, along with smaller local offices for on-site support and service throughout North America, Europe and Asia.

Our main facility in North America has clean room manufacturing and testing capacity for processes that require a high level of control. Our manufacturing processes include cradle to grave tracking for the tight requirements of aerospace and defence. We have automated manufacturing processes to provide tight tolerance and consistent quality. Our quality systems meet the high standards of the aerospace and defence industries.

The Cleeve Group of Companies has extensive experience and expertise with import export regulations for North America and abroad. Our products and services are in full compliance with all ITAR rules, and we provide all necessary documentation and certificates for controlled goods and cross border requirements.

We have implemented extensive SHE (Safety, Health, Environmental) policies at all of our facilities to optimize health, safety and environmental concerns, going above and beyond local regulations. Green thinking is embedded in our processes and design reviews.

At Cleeve, we like to stand out amongst the crowd with our innovation, creativity and perseverance. Our mission is to apply our core strengths to the benefit of our clients and continue to bring new technologies to market quickly, safely and effectively.

The Cleeve Group of Companies have facilities worldwide including: Oshawa, Concord and Trenton, Ontario Canada; Dartmouth, Nova Scotia, Canada; Paris, France; Rochester New York, USA; and, Swindon, Wiltshire, UK. We have distributors and agents in Charlotte North Carolina, Los Angeles, California, USA; Singapore and Malaysia, Southeast Asia; Korea, East Asia; Tokyo, Japan; Shanghai, China; Taipei, Taiwan; Turkey; and Brazil.



# CLEEVE TECHNOLOGY INCORPORATED – CANADA



Cleeve Technology Incorporated (Cleeve) is based in Oshawa, Ontario, Canada, between Ottawa, Montreal and Toronto.

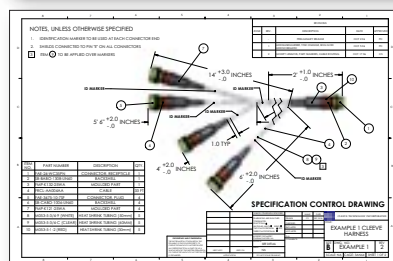
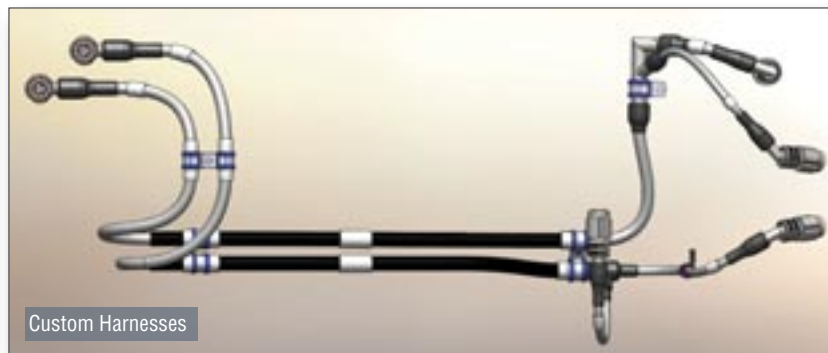
Cleeve takes a systems approach to help solve customer problems, with products supplied in a component or sub-assembly form or as a complete electrical system supported with drawings and service manuals.

When reliability counts, you can trust in Cleeve with our extensive experience in industrial, telecommunications, aircraft, marine, security, military and aerospace markets.

Cleeve's ability to demonstrate commercial savings while mitigating risk and ultimately improving an overall electrical or mechanical system has proven beneficial to many aerospace and defence related companies.



If you have specific questions or would like additional information, please send inquiries by e-mail to [solutions@cleevetech.com](mailto:solutions@cleevetech.com) or visit our website at [www.cleevetech.ca](http://www.cleevetech.ca)



Specification Control Drawing Sample

# CLEEVE TECHNOLOGY LIMITED – UNITED KINGDOM



Cleeve Technology UK Limited (Cleeve UK) is based in Swindon, Wiltshire and is very near to the M4 motorway with easy access to London, Bristol, Cheltenham, Birmingham and most other major cities.

Cleeve UK supports and supplies electrical interconnect solutions, mechanical parts and enclosures for the military, aerospace, industrial and automotive communities.

Our products and capabilities allow us to fully support the integration and supply of our components and assemblies to meet the many customer and program requirements.

Since we take a "front end approach" we can support the initial design and bid stages and therefore help to reduce costs. We offer design, development and prototyping through to production manufacturing and on-site installation and qualification of electrical harnesses. We ensure compatibility of all products used in an electrical harness system, panel or box.

In addition, Cleeve UK, through its worldwide presence has undertaken "material facilitator" roles, whereby we provide the stocking and kitting role for many prime OEMs and government agencies to support their material requirements on an urgent and planned production basis.

Cleeve UK has capabilities in materials management and distribution, harness manufacturing, machined parts, metal fabrication and engineering services.

Cleeve UK is ISO AS9100 certified and is keen to support you and your electrical/electronic needs in any way we can.



If you have specific questions or would like additional information, please send inquiries by e-mail to [support@cleevetech.co.uk](mailto:support@cleevetech.co.uk) or visit our website at [www.cleevetech.co.uk](http://www.cleevetech.co.uk)

*"There is no doubt that creativity is the most important human resource of all. Without creativity, there would be no progress, and we would be forever repeating the same patterns."*

- Edward de Bono

# ENABLE INTERCONNECT INC. – CANADA



Originally established as Enable Industries Inc. in 1998, Enable Interconnect Inc. (Enable) is a leading provider in the design, manufacturing and delivery of interconnectivity solutions, such as cable assemblies, wire harnesses and panel assemblies.

Since merging with Cleeve Technology Inc. (Cleeve) in 2012, Enable operates independently within Cleeve's primary site located in Oshawa, Ontario and provides quality service to a global market.

Enable has an unparalleled history of meeting the needs of a diverse market, identifying distinct customer requirements, and trading within our core industry sectors. We take pride in our long-standing record of dependability, quality, precision and service.

Enable is known to offer superior products and customer service for a variety of industries and applications. Each sector requires an understanding of its unique needs, and our certified experts are trained to identify, meet and exceed all of your business needs. The diverse list of industries we serve includes:

- Automated Equipment Manufacturers
- Building Automation
- Building Maintenance
- Construction
- Electrical Contractors
- General Contractors
- Heavy Equipment
- Homeland Security
- Industrial Automation
- Industrial Equipment Manufacturers
- Instrument Controls
- Material Handling
- Medical (Life Sciences)
- Military/Defence
- Mining Systems
- Network System Providers
- System Integrators
- Telecommunications
- Test Labs and Facilities
- Traffic Control Systems

Enable's team of professionals will work with you to determine the best solutions for your power or signal interconnectivity requirements, keeping you informed of the latest technology and enhancements available.

From design to delivery, our customers feel confident that they have invested in quality products and services that yield uncompromising results.





Specializing in cable assemblies, wire harnesses, panel assemblies and box builds, Enable provides electro-mechanical design, manufacturing, parts and services for high-reliability industrial, commercial, aerospace and defence applications.

**Our main product line includes:**

- Box Builds
- Cable
- Cable Assemblies
- Cabling Systems
- Connectors
- Components
- Control Systems
- General Assembly
- Hardware
- Material Sourcing
- Mechanical Systems
- Panel Assemblies
- Sensors
- Service and Repair
- Soldering
- Switches
- Wire
- Wire Harnesses
- Wire Processing

**Our services include:**

- Custom cable assemblies, wire harnesses, panel assemblies and components;
- Design and improvements of cable assemblies, wire harnesses, panel assemblies and components;
- Engineering services, including new product development, drawings and bills of materials;
- Material sourcing and distribution;
- Precision crimping and soldering;
- Reverse engineering of existing assemblies;
- Service, repair and maintenance; and
- Wire processing: cut to length, stripped to length and re-spooled to meet requirements.



If you have specific questions or would like additional information, please send inquiries by e-mail to [solutions@enableconnect.com](mailto:solutions@enableconnect.com) or visit our website at [www.enableconnect.ca](http://www.enableconnect.ca)

# MIL-AERO ELECTRONICS ATLANTIC INC. – CANADA



Located in Atlantic Canada, Mil-Aero Electronics Atlantic Inc. (Mil-Aero) is a private company in Dartmouth, Nova Scotia and is part of the Cleeve Technology International Group of Companies. We specialize in the integration, assembly and supply of high-performance electrical components and cable and electrical harness assemblies to the military, aerospace, industrial and communications markets.

Mil-Aero offers seamless manufacturing of build to print electrical cables, electrical harness assemblies and electro-mechanical control chassis.

## PRODUCTS

Mil-Aero designs prototype cables and harnesses using state-of-the-art wire cutting and wire stripping equipment to maintain the best quality and consistency in meeting customer requirements. Our highly qualified and reliable staff works with customers during the prototype phase of development to ensure manufacturability and quality is designed into their product for the best possible solution at the lowest possible cost.

### Cables

We can construct custom cables, such as a mix of conductors and shielding that do not exist off-the-shelf.

### Wire Harnesses

We manufacture custom single and multi-branch wire harnesses. Automated wire cutting, stripping and crimping are used to provide exceptional quality at a competitive price.

### Flexible RF Coaxial

We manufacture custom flexible RF coaxial cables terminated with a wide variety of connectors, as well as cables with in-line printed circuit assemblies as required by our customers. Automated wire cutting and coaxial stripping provides consistent quality at a competitive price.

### Electro-Mechanical Enclosures

We manufacture custom electro-mechanical enclosures, such as test boxes and control panels. The enclosures often contain printed circuit assemblies, wire harnesses and other intricate connections. Strict process and quality control and detailed work instructions allow for the management of complex, high-volume builds.



## CAPABILITIES

MilAero has the expertise, versatility and efficiency to manufacture a variety of quality products in a cost-effective manner. Our strengths and capabilities include:

- automated heat shrink and wire cutting;
- automated, combined wire strip/crimp and coax cable stripping;
- weave braiding directly onto cables (over-braid);
- automated hipot cable testing; and
- custom printing of cable marker labels, as required.

## Flexibility

We build high mix, low volume systems at affordable prices thanks to our short set-up times and quick changeovers. We also use process engineering capability to design and set up assembly lines for low mix, high volume builds.

## Materials Management and Traceability

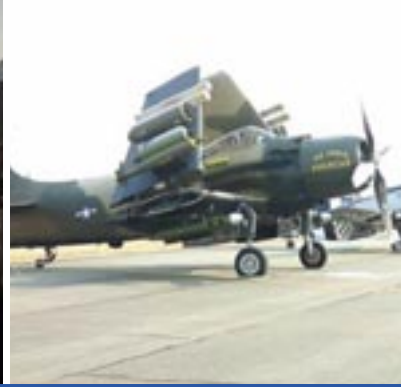
Our fully integrated Material Requirements Planning (MRP) system ensures state-of-the-art material management and production control, including:

- bill of materials integration;
- inventory management;
- sales and purchase order processing;
- scheduling and capacity planning; and
- financial management.

Mil-Aero is committed to following strict quality and process control protocols to ensure the best outcomes and safest environments possible. As a company that takes pride in meeting a high demand for quality and safety, Mil-Aero is certified to AS 9100 and ISO 9001 standards, ensuring strict quality control in the design and distribution of electrical interconnect systems and components to aerospace and commercial/industrial markets.



If you have specific questions or would like additional information, please send inquiries by e-mail to [info@mil-aero.com](mailto:info@mil-aero.com) or visit our website at [www.milaero.ca](http://www.milaero.ca)



### A Cleeve Group of Companies

#### World Headquarters

Cleeve Technology Incorporated  
716 Colonel Sam Drive, Oshawa, Ontario  
Canada L1H 7Y2  
Tel: 905-579-9502 | Fax: 905-579-9991  
Email: [solutions@cleevetech.com](mailto:solutions@cleevetech.com)  
[www.cleevetech.ca](http://www.cleevetech.ca)

#### Cleeve Technology Limited

Unit 4 Birch, Kembrey Park, Swindon  
England, United Kingdom SN2 8UU  
Tel: 011-44(0)1793-490456 | Fax: 011-44(0)1793-618628  
Email: [interconnect@cleevetech.co.uk](mailto:interconnect@cleevetech.co.uk)  
[www.cleevetech.co.uk](http://www.cleevetech.co.uk)

#### Enable Interconnect Inc.

716 Colonel Sam Drive, Oshawa, Ontario  
Canada L1H 7Y2  
Tel: 905-579-2316 x252 | Fax: 905-579-9991  
Email: [solutions@enableconnect.com](mailto:solutions@enableconnect.com)  
[www.enableconnect.ca](http://www.enableconnect.ca)

#### MilAero Electronics Atlantic Inc.

81 Mount Hope Avenue, Dartmouth, Nova Scotia  
Canada B2Y 4K9  
Tel: 902-469-6232 | Fax: 902-466-6889  
Email: [info@mil-aero.com](mailto:info@mil-aero.com)  
[www.milaero.ca](http://www.milaero.ca)



Toll Free: 1-800-937-5135

